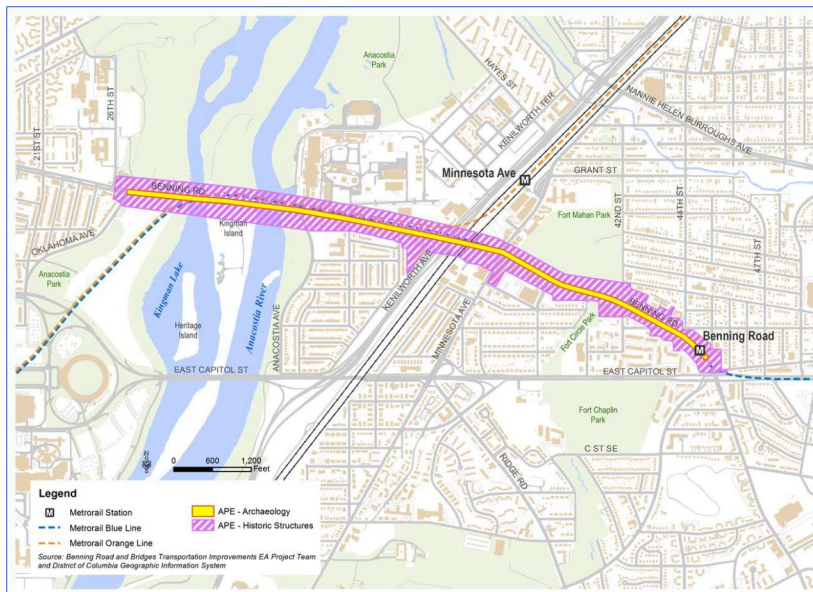


Section 106

Historic and Cultural Resources Evaluation (Section 106)

- Requires consultation with State Historic Preservation Office (SHPO), interested parties & the public.
- Identifies known historic properties and evaluates previously unevaluated historic properties within the Area of Potential Effect (APE).
- Examines the potential effects on historic and cultural resources in the APE.
- Effects to cultural resources are assessed and any adverse effects are avoided, minimized and/or mitigated. SHPO is currently reviewing the Cultural Resources Assessment.
- Resolve Adverse Effects, if necessary.

APE for Historic Structures and Archeology



Listed or Eligible Historic Resources in the APE

Resource Name	Status
Fort Mahan/ Civil War Sites (Defenses of Washington) District	NRHP Listed
Langston Golf Course Historic District	NRHP Listed
Anacostia Park	NRHP Eligible
Senator Theater Entrance Pavilion	DCIHS Listed
Spingarn School	DCIHS Listed
Browne, Phelps, Spingarn, and Young Schools Historic District	NRHP Eligible
3300 Benning Road – PEPCO Bldg 32	NRHP Eligible
4201-4243 Benning Road	NRHP Eligible
4208 Benning Road	NRHP Eligible
Fire and Police Call Boxes	NRHP Eligible
4001 Benning Road	NRHP Eligible
Baltimore & Potomac Railroad	NRHP Eligible
3938 Benning Road	NRHP Eligible
4228 Benning Road	NRHP Eligible
4236 Benning Road	NRHP Eligible
4270 Benning Road	NRHP Eligible
4274 Benning Road	NRHP Eligible