



# WELCOME

## Benning Road Transportation Improvements Environmental Assessment

Public Meeting

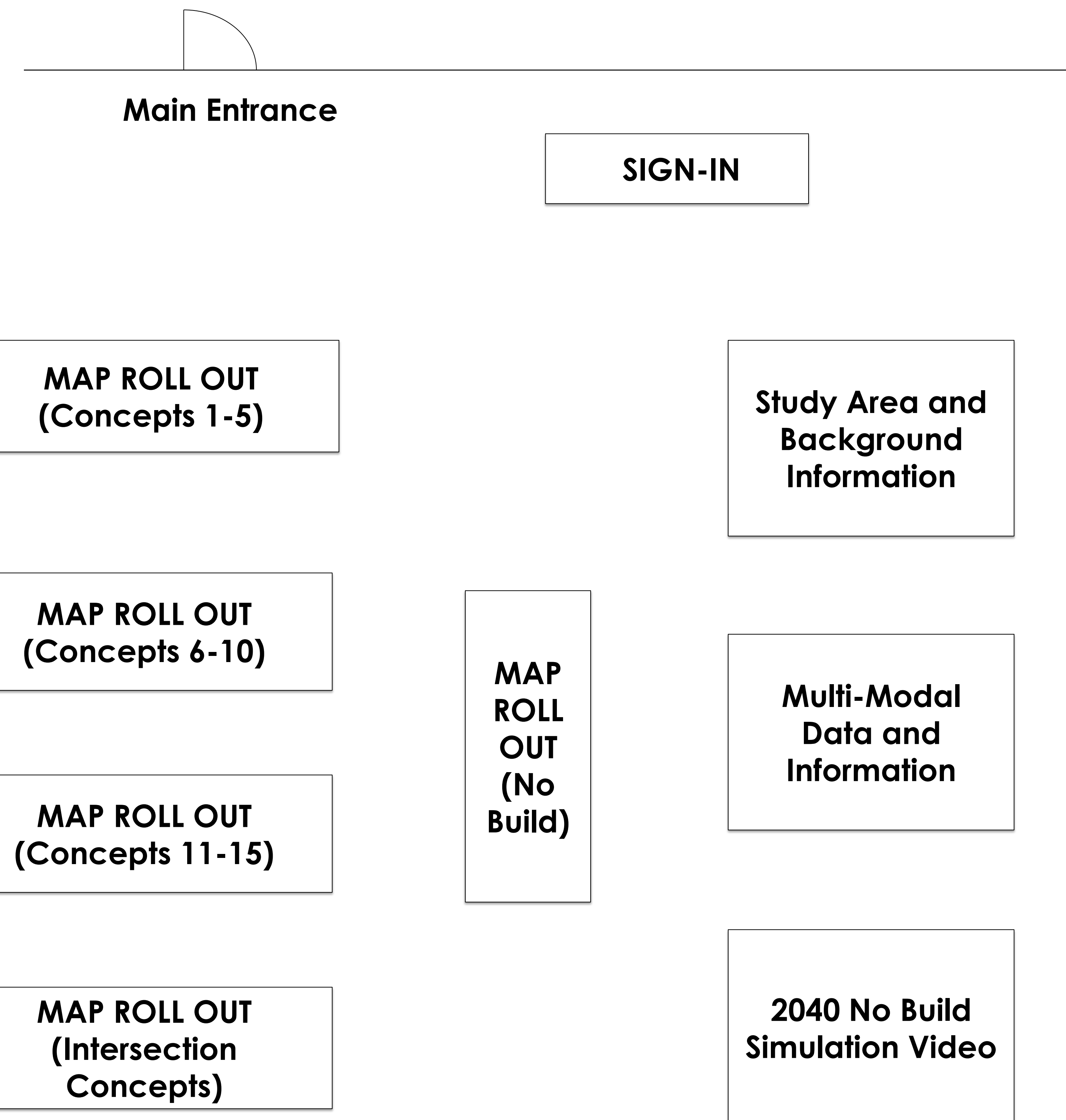




# Meeting Purpose

## The purpose of today's meeting is to:

- Provide information about the NEPA and Section 106 Process
- Provide existing conditions information
- Get feedback on potential alternatives to be developed by project team



The District Department of Transportation (DDOT) does not discriminate on the basis of actual or perceived: race, color, national origin, sex, age, marital status, personal appearance, sexual orientation, gender identity or expression, familial status, family responsibilities, matriculation, political affiliation, genetic information, disability, source of income, status as a victim of an intrafamily offense, or place of residence of business as provided by Title VI of the Civil Rights Act of 1964, the Americans with Disabilities Act, the D.C. Human Rights Act of 1977, and other related statutes. If you need special accommodations or language assistance services (translation or interpretation) please contact Malia Salaam at (202) 563-5003 or [info@benningproject.com](mailto:info@benningproject.com) 72 hours in advance of the meeting. These services will be provided free of charge.

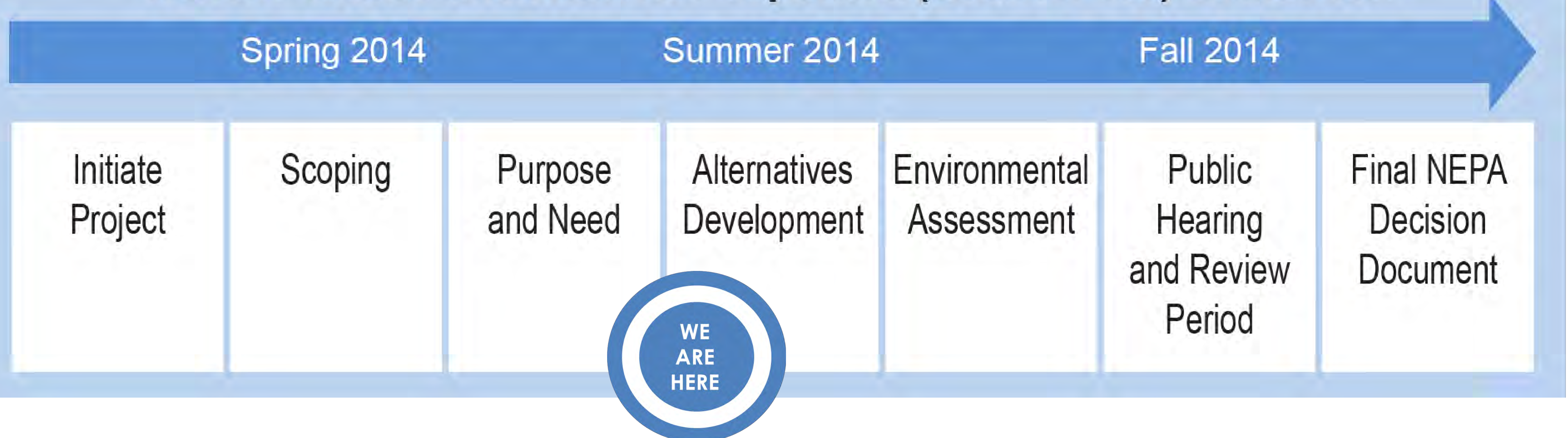


# Schedule and EA Process

The project schedule includes the following milestones:

- **Project Kick-off Meeting:** December 19, 2013
- **Agency Scoping Meeting:** April 1, 2014
- **Public Scoping Meeting:** April 22, 2014
- **Public Alternatives Development Meeting:** May 28, 2014
- **Initial Alternatives:** May-June 2014
- **Draft Environmental Assessment:** Summer 2014
- **Public Hearing:** Fall-Winter 2014
- **Decision Document:** Winter 2015

## NEPA Process and Historic Properties (Section 106) Evaluation



- FHWA lead federal agency, with DDOT as joint lead
- FTA, NPS, NCPC invited as cooperating agencies

EA = Environmental Assessment

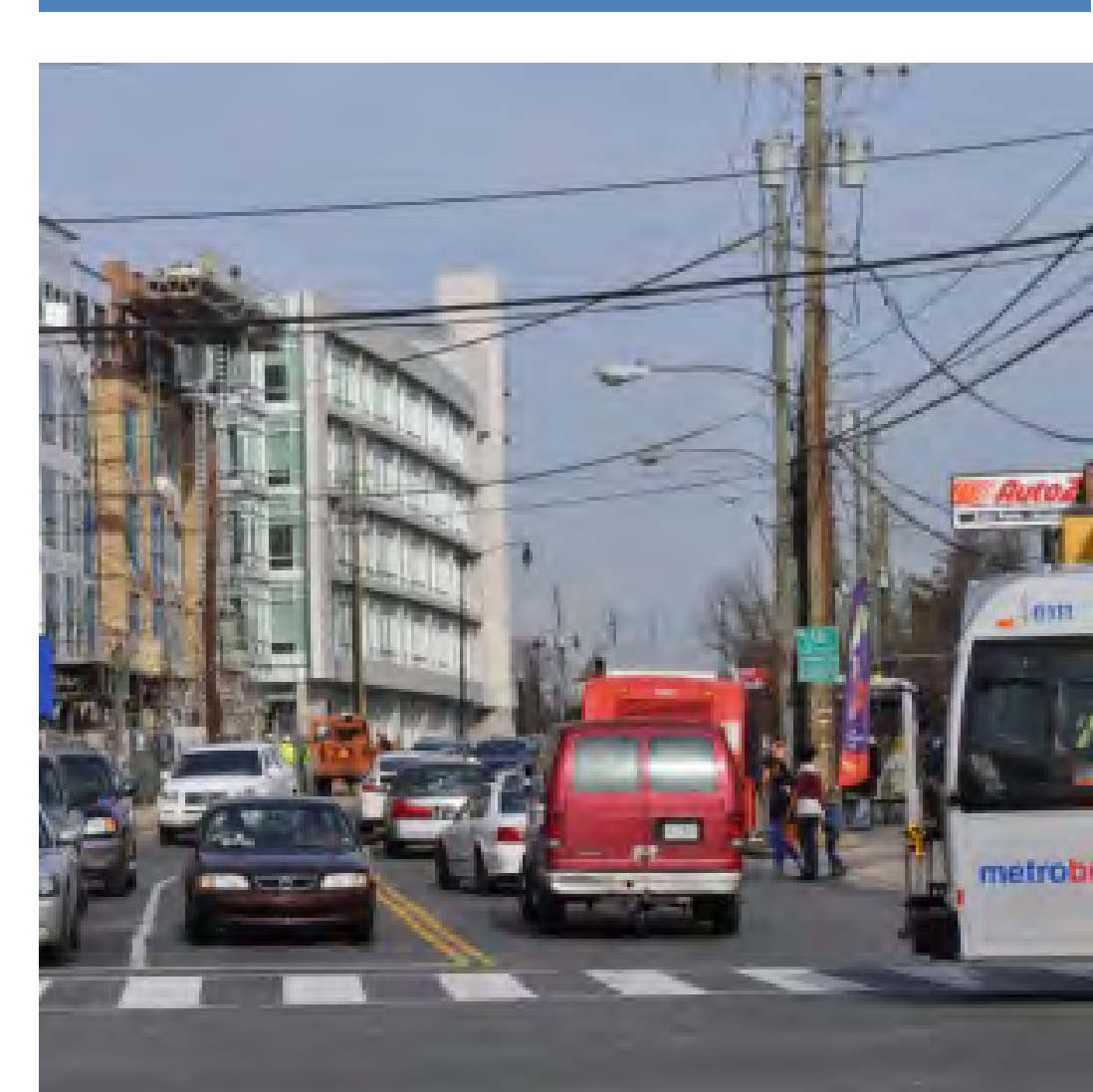
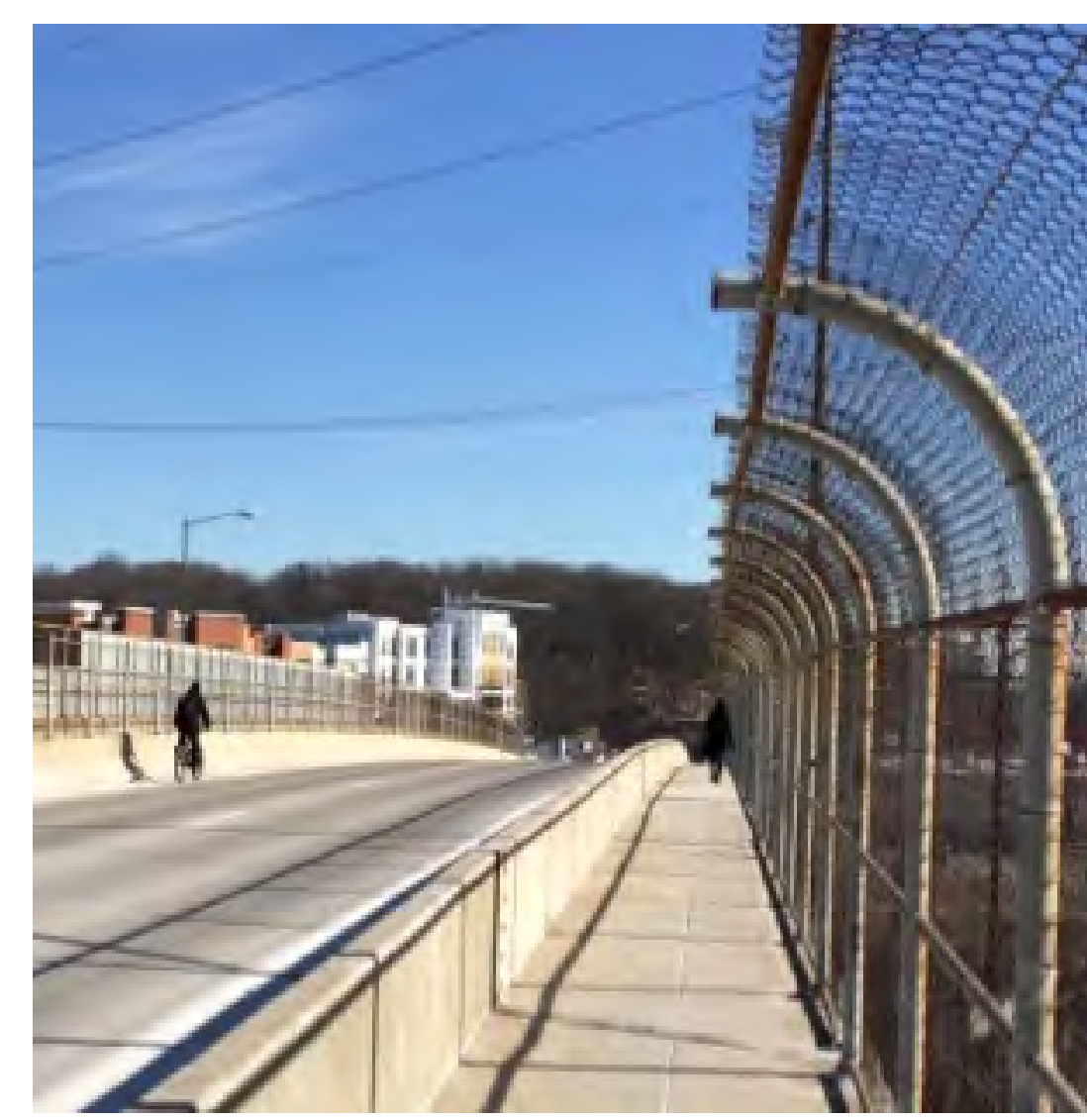
NEPA = National Environmental Policy Act



# Study Area

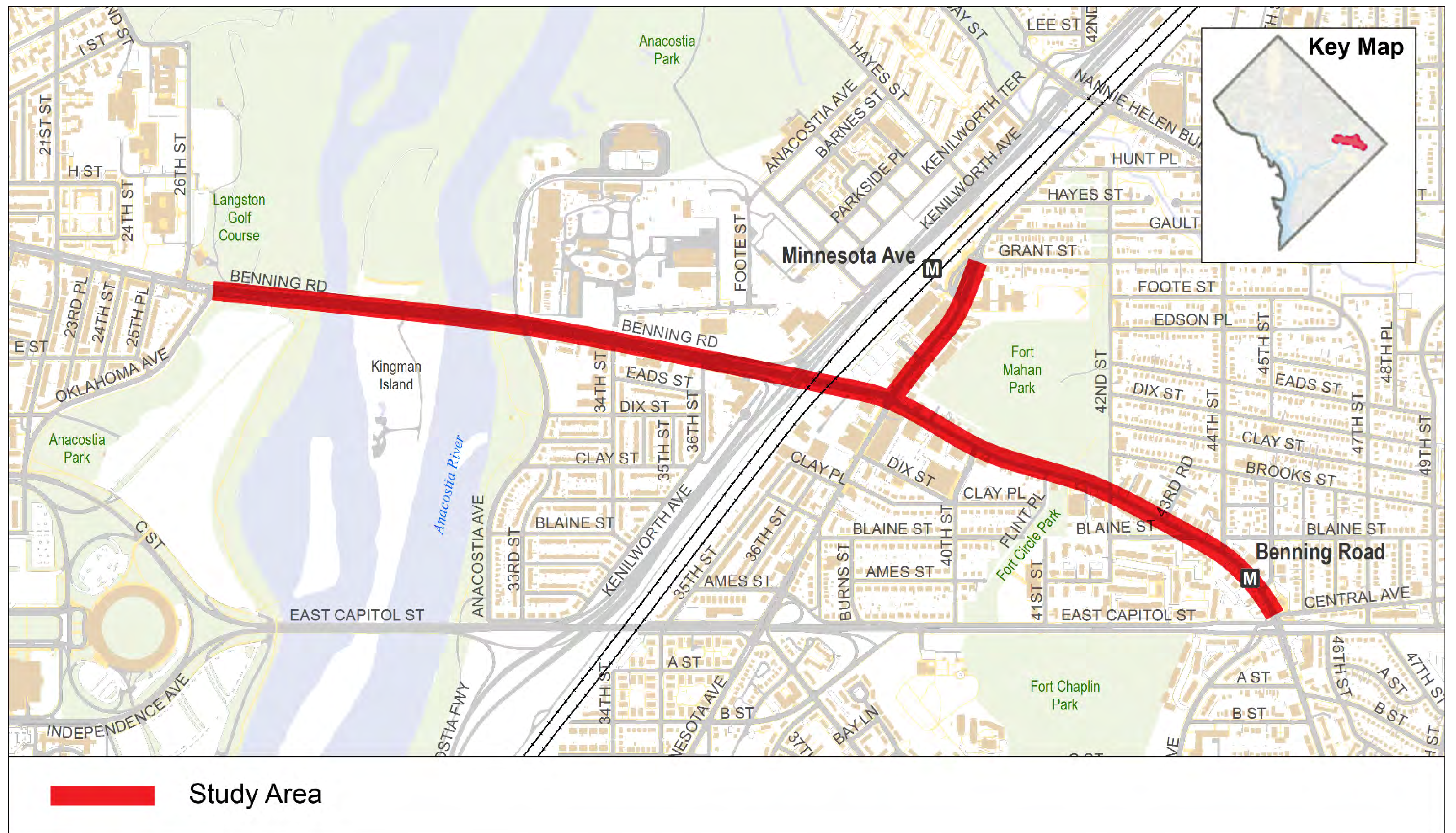
## About the project area:

- 2 mile corridor including roadway and bridges
- Adjacent to H Street/Benning streetcar line
- Crosses the Anacostia River, Kingman Island, DC 295 and Metro and CSX tracks
- Includes 2 Metrorail stations
- Benning Road is primarily 3-lanes in each direction from 15<sup>th</sup> Street NE to Minnesota Ave
- Benning Road is primarily 2-lanes in each direction from Minnesota Ave to Benning Road Metro Station





# Study Area



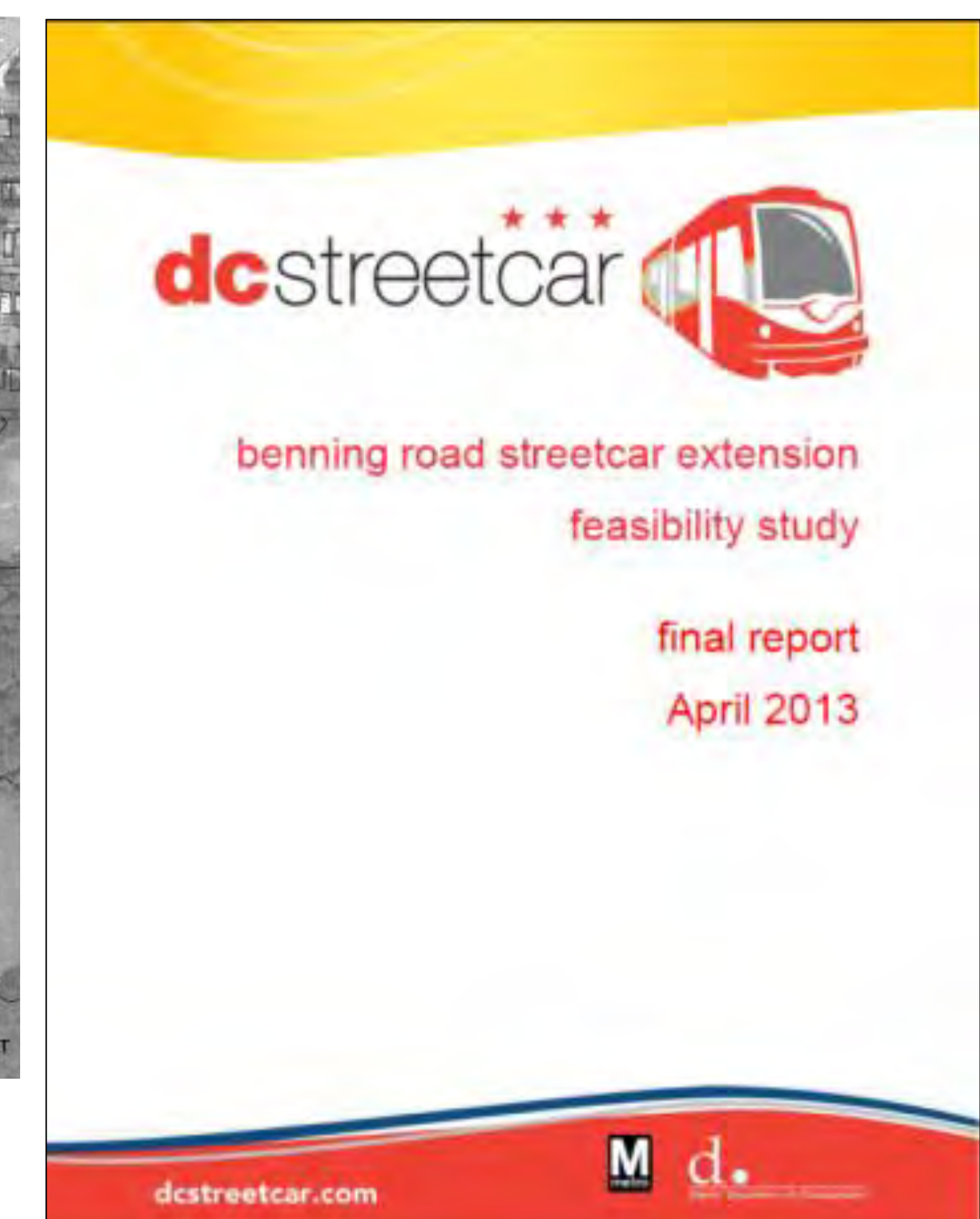
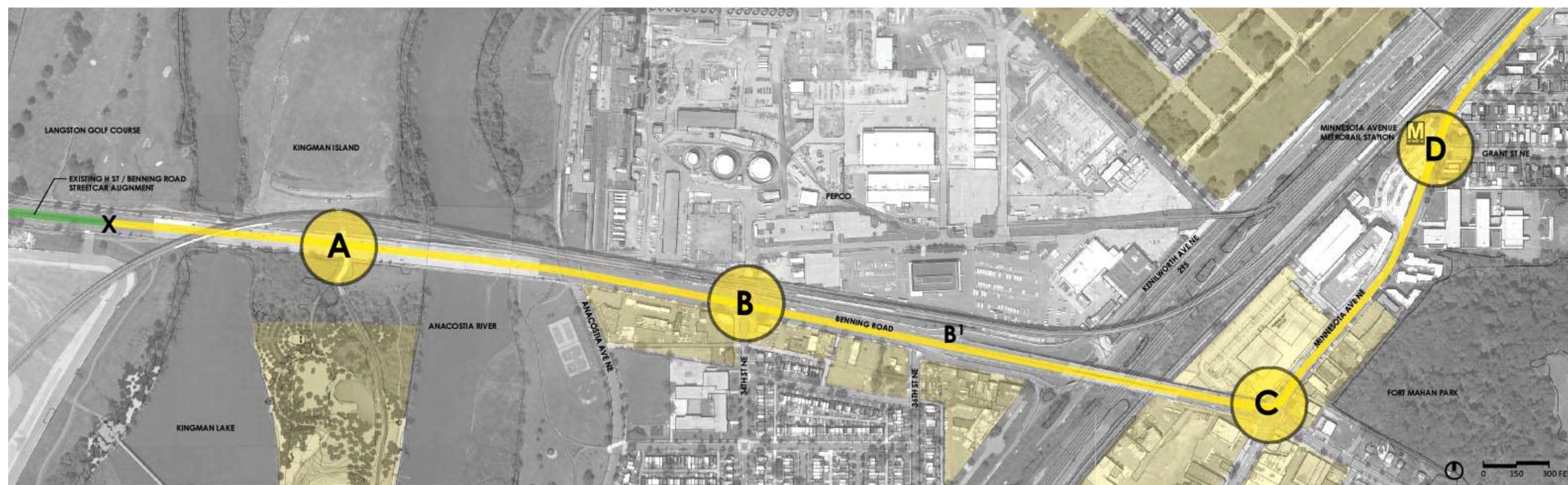
Project area extends from Oklahoma Ave NE to Benning Road Metro Station and includes Minnesota Avenue between Benning Road and Minnesota Avenue Metro Station



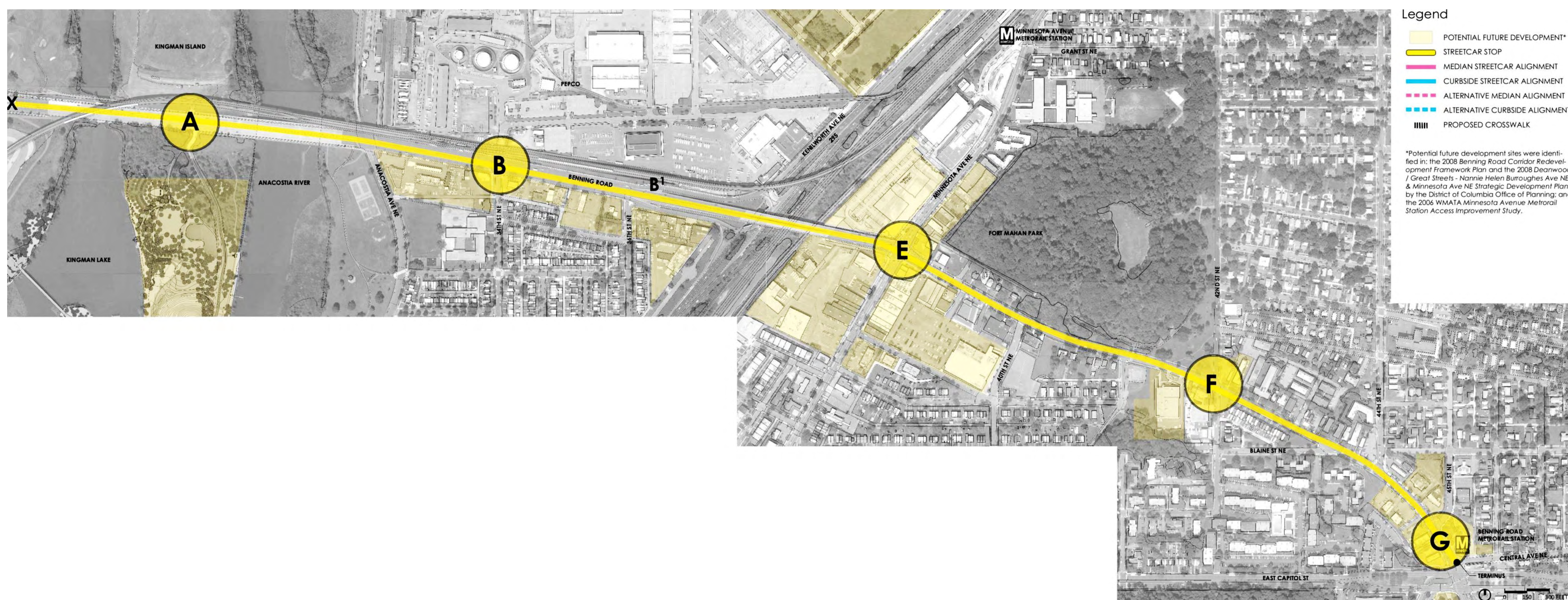
# Previous Planning

The Benning Road Streetcar Extension Feasibility Study completed in 2013 developed two alternatives for the project area:

## Minnesota Avenue Metrorail Station Terminus



## Benning Road Metrorail Station Terminus

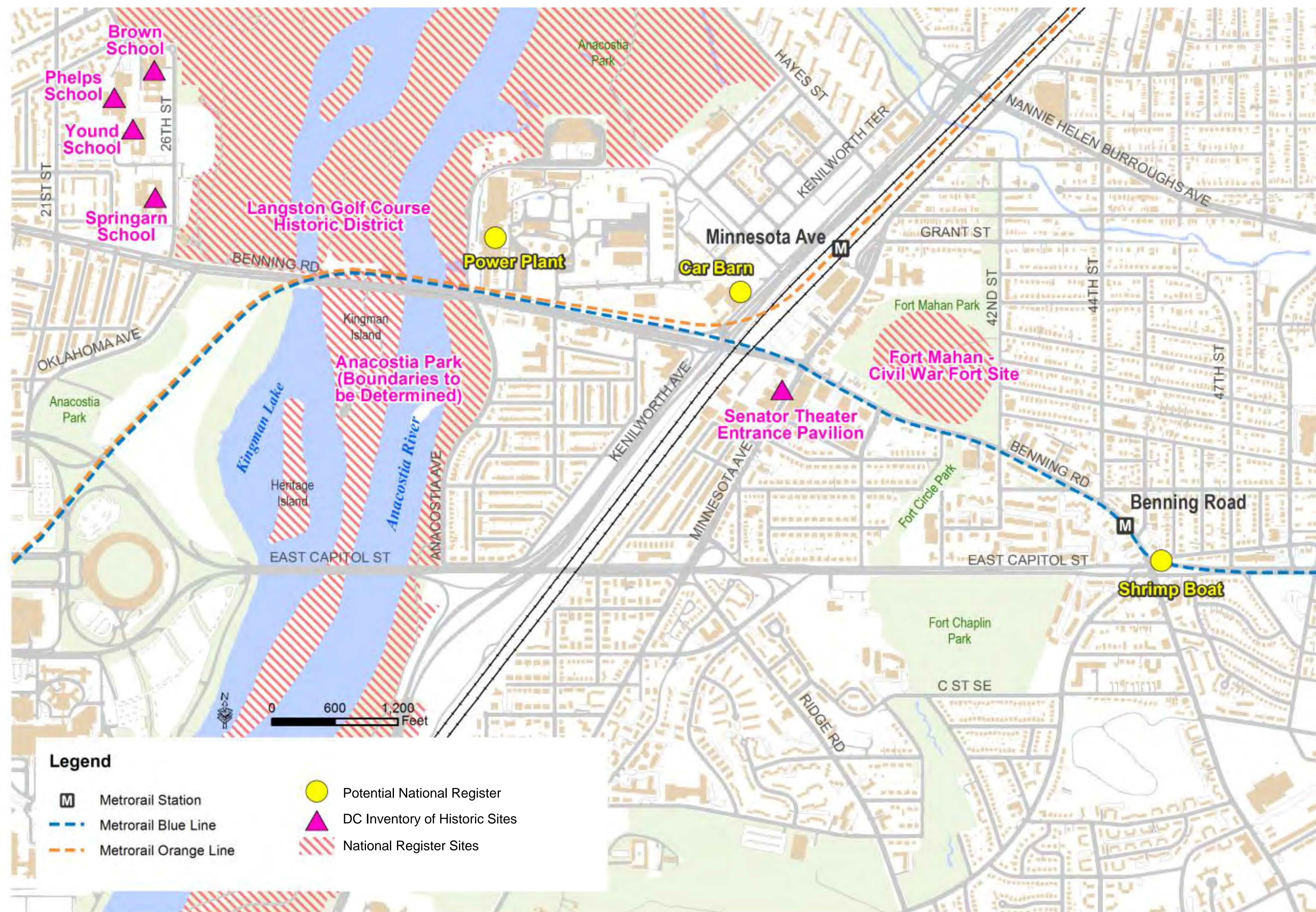




# Section 106

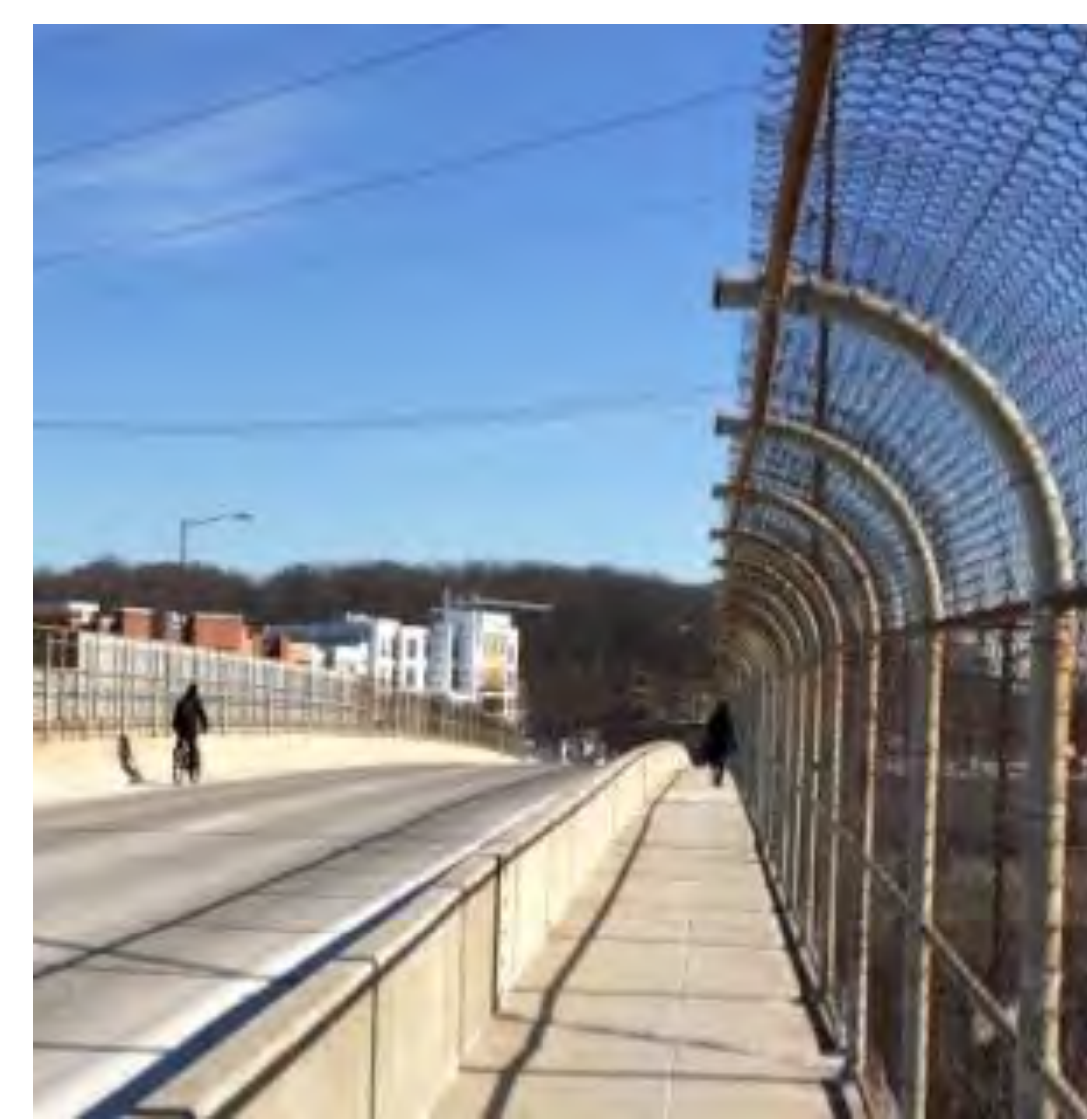
## National Historic Preservation Act Section 106 process:

- Consultation with DC SHPO (State Historic Preservation Office)
- Interested parties are invited to participate
- Identifying historic resources and effects of improvements



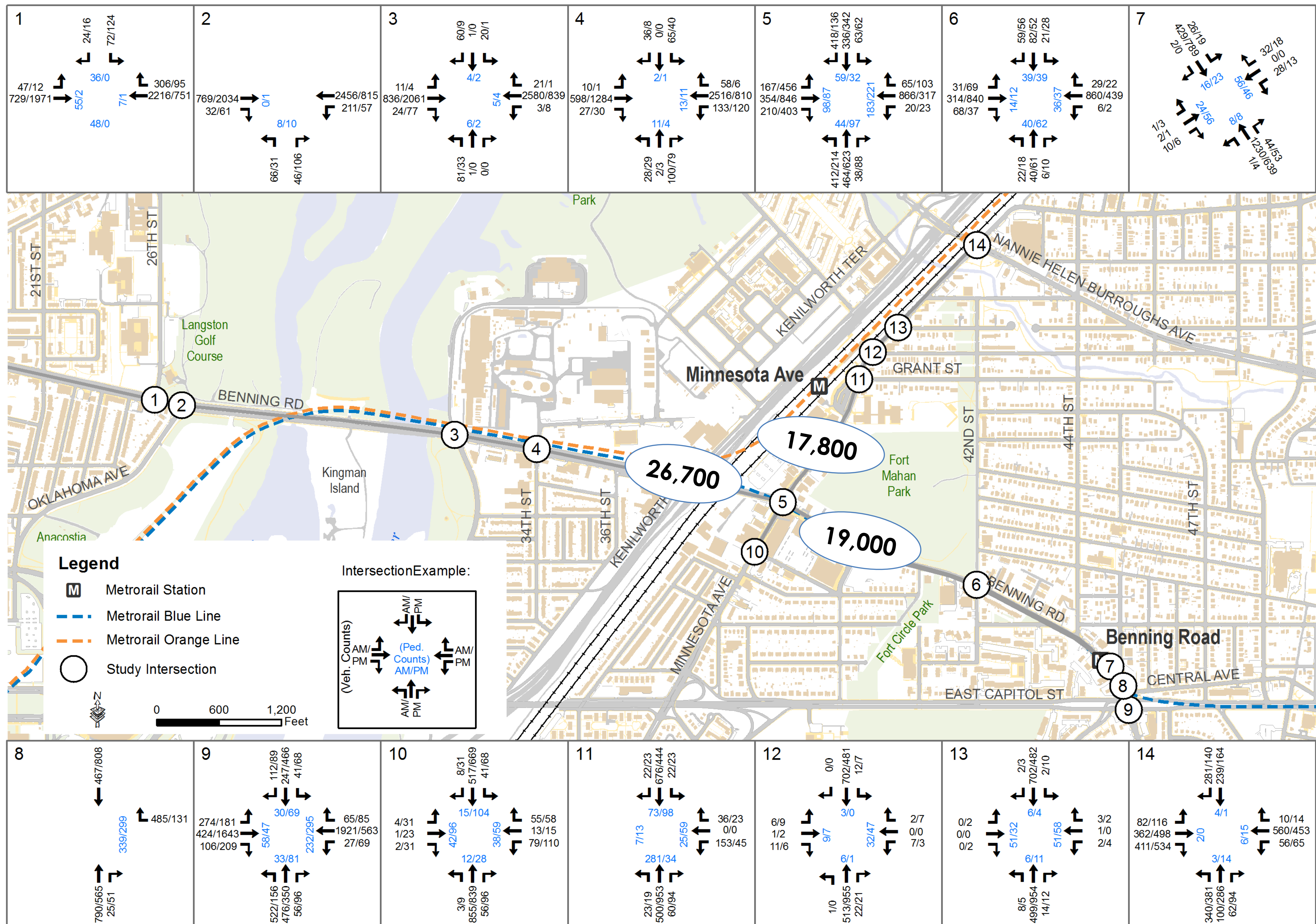


# Parks, Open Spaces and Community Resources



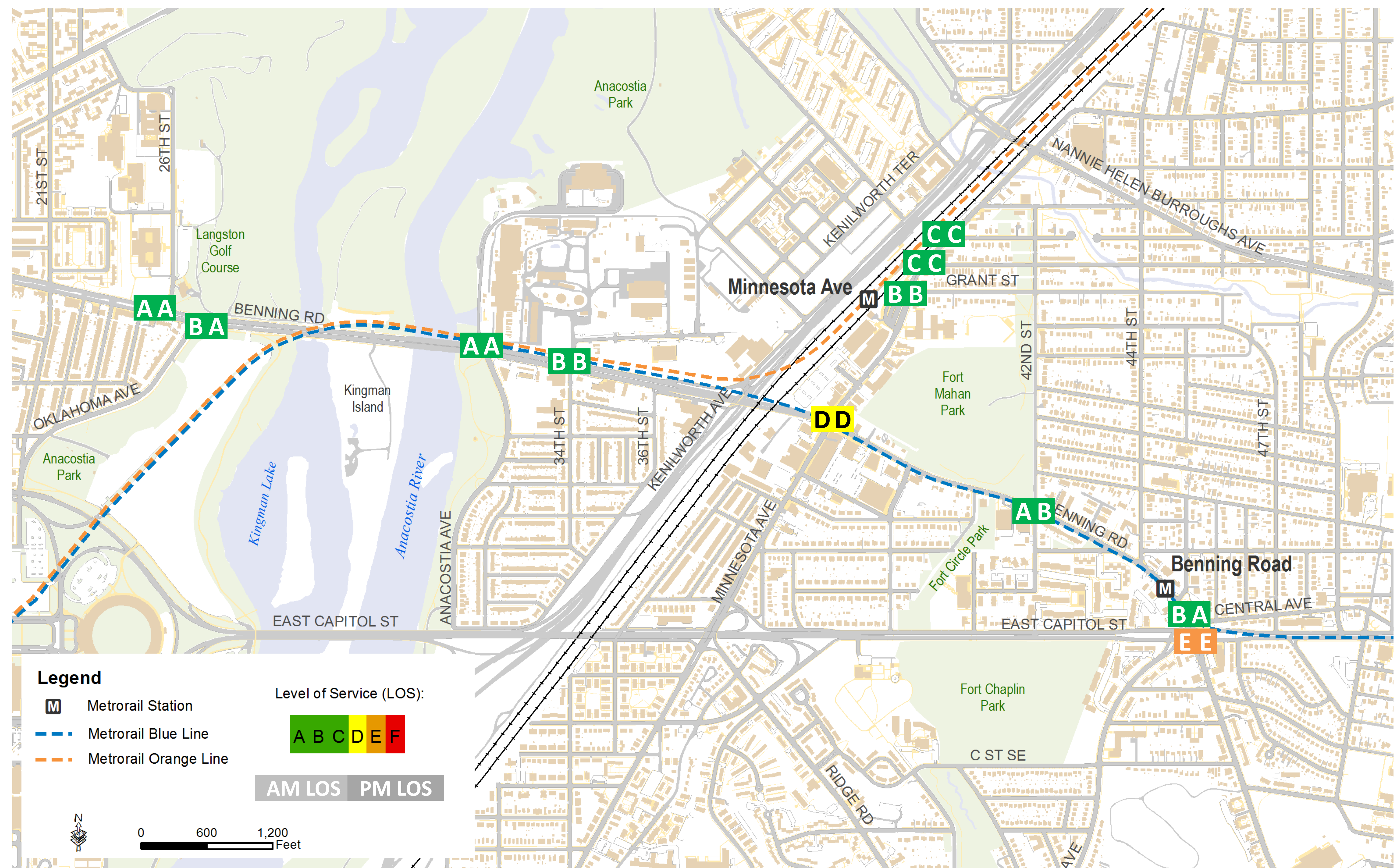


# Existing Traffic Volumes





# Existing Traffic Level of Service



LOS "A" (less than 10 sec. delay)  
LOS "B" (between 10 and 20 sec. delay)



LOS "C" (between 20 and 35 sec. delay)



LOS "D" (between 35 and 55 sec. delay)  
LOS "E" (between 55 and 80 sec. delay)



LOS "F" (more than 80 sec. delay)





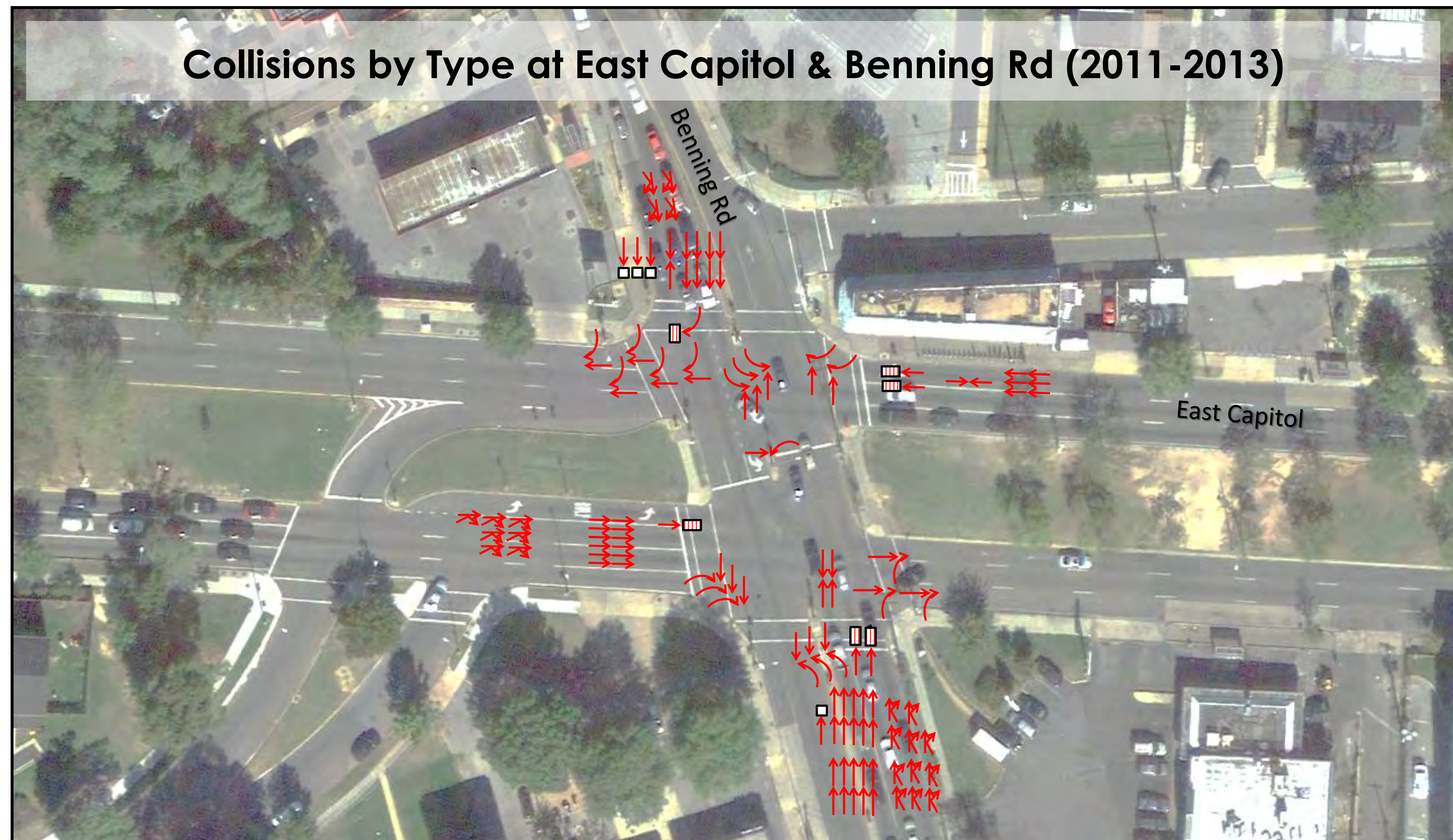
# Traffic Crash Data

Intersection	Number of Crashes	Crash Rate (MEV)	Collision Type (2011-2013)									Crashes Resulting in Injury
			Rear-end	Sideswipe	Right Angle	Head On	Left Turn Hit Veh	Left Turn Hit Ped	Right Turn Hit Veh	Right Turn Hit Ped	Straight Hit Ped	
Benning Rd and Anacostia Ave	23	0.46	52%	17%	17%		4%					12
Benning Rd and 34th St	16	0.31	19%	25%	6%	6%	19%		13%			9
Benning Rd and 36th St	26	0.74	46%	31%	4%	4%	8%					14
Benning Rd and Minnesota Ave	120	2.48	28%	31%	4%	3%	12%	1%	7%	4%	5%	38
Benning Rd and 45th St	12	0.49	25%	42%			8%		8%		8%	4
Benning Rd and Central Ave	10	0.43	30%	40%			10%		10%		10%	3
Benning Rd and East Capitol St	90	1.51	26%	27%	8%	4%	6%		9%	2%	7%	32
Minnesota Ave and Dix St	16	0.64	44%	0%	6%		19%		13%		6%	9
Minnesota Ave and Grant St	16	0.72	44%	19%			13%					7
Minnesota Ave and Hayes St	2	0.11	50%	50%								0
Minnesota Ave and Gault Pl	6	0.32	17%	50%			17%					1
Minnesota Ave and NHB Ave	49	1.39	35%	27%	12%	6%	6%		6%			22

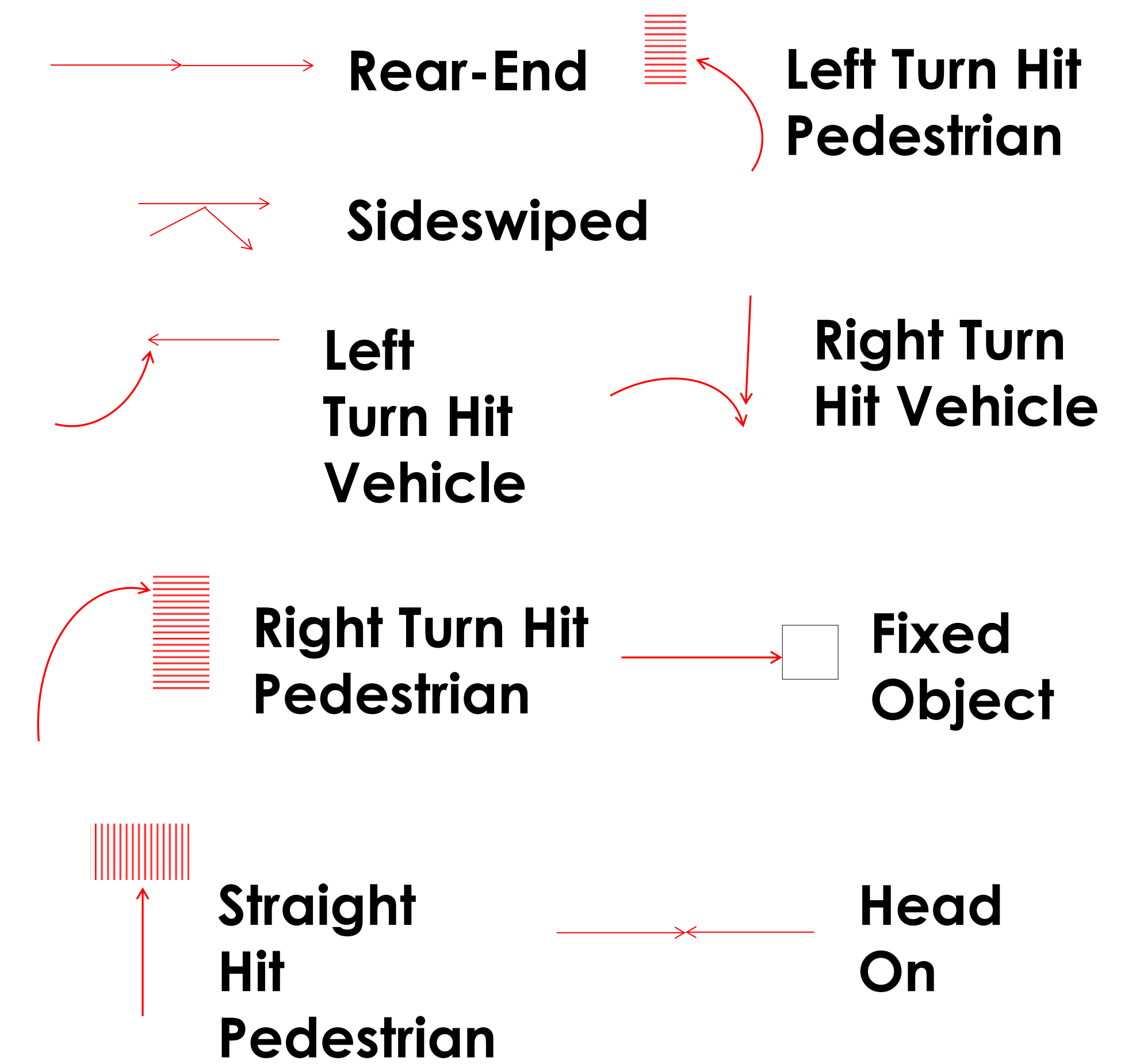


# Traffic Crash Data

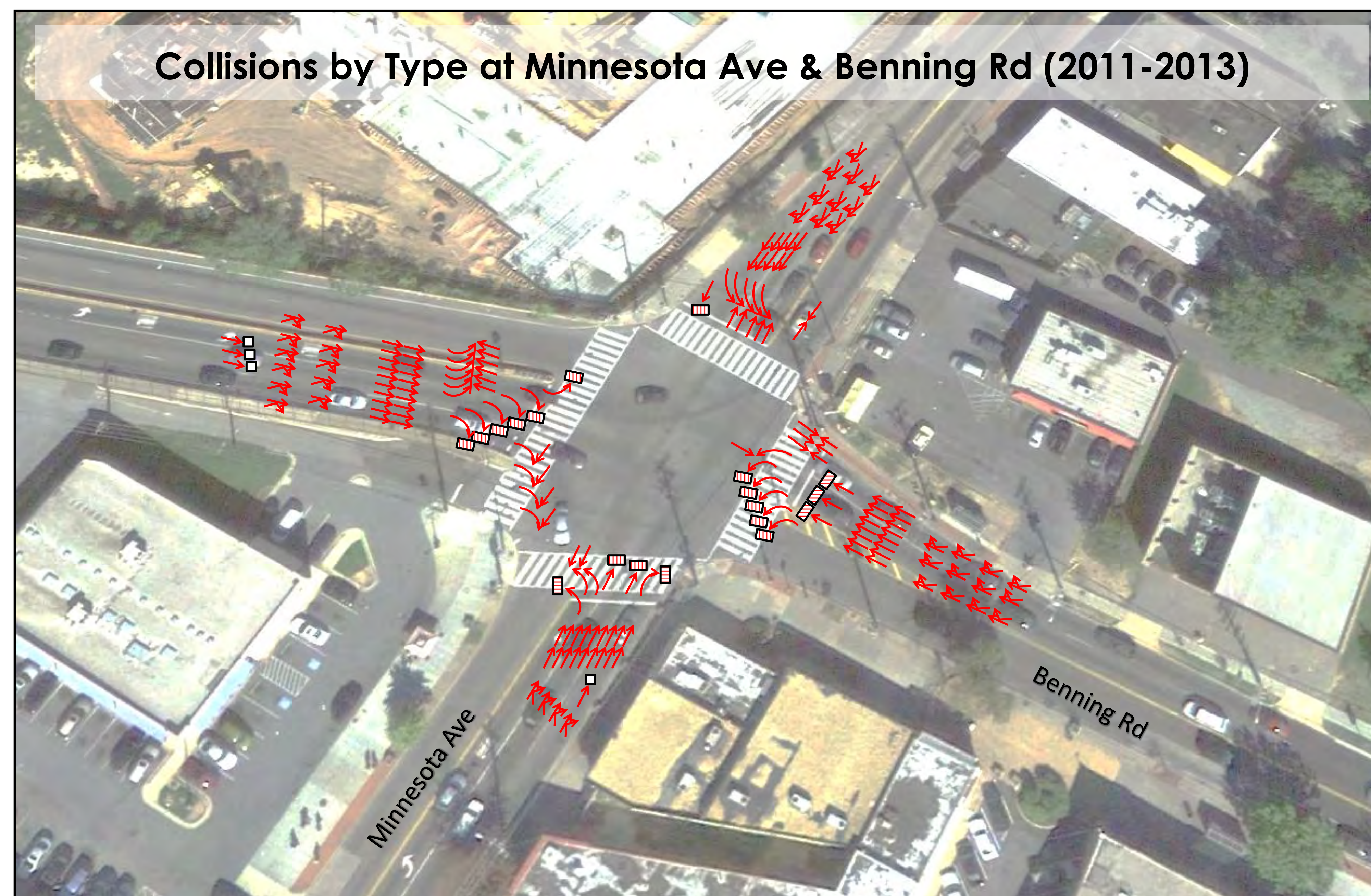
Collisions by Type at East Capitol & Benning Rd (2011-2013)



## Types of Collisions



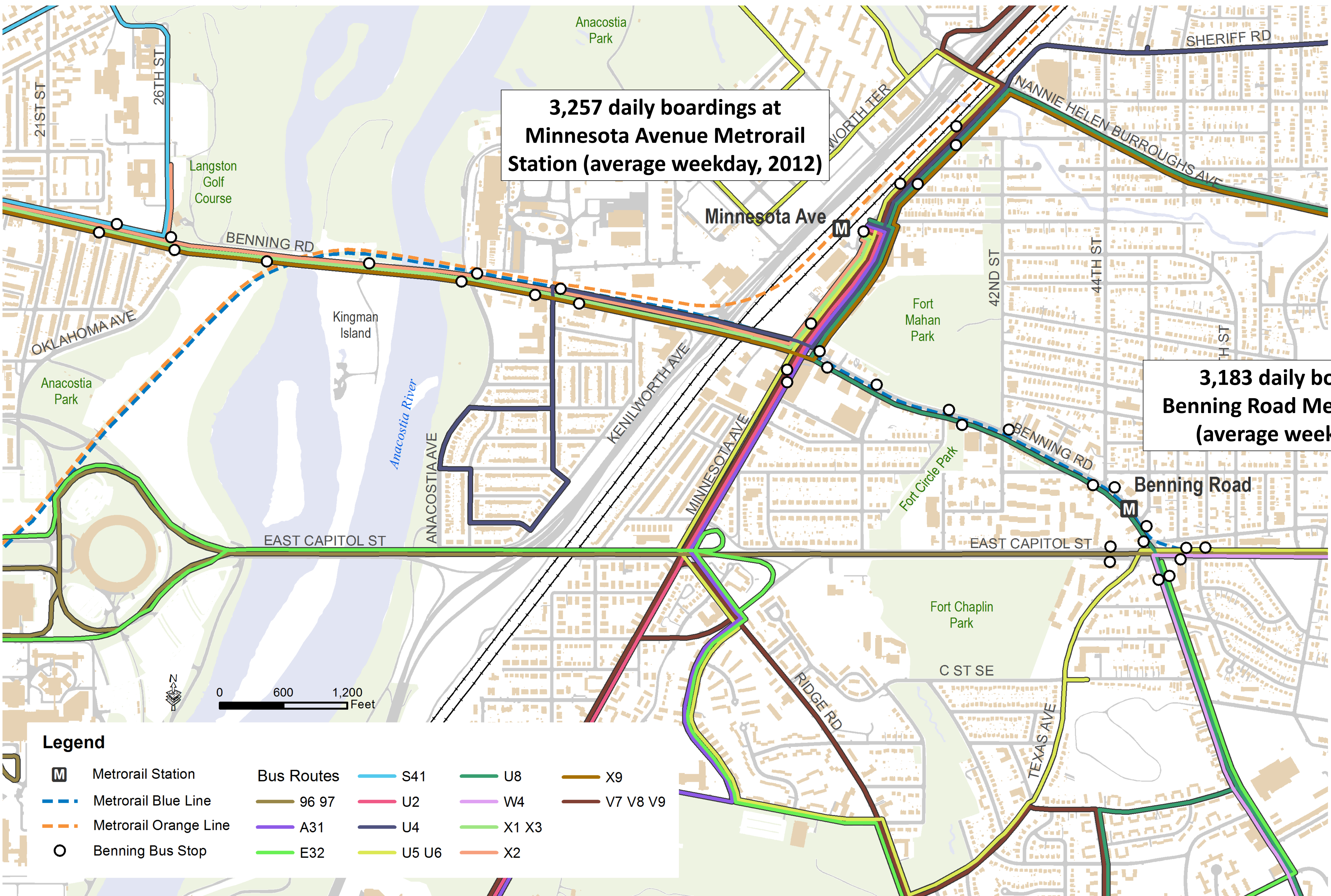
Collisions by Type at Minnesota Ave & Benning Rd (2011-2013)



Pedestrians crossing Benning Road at Minnesota Ave



# Transit Service

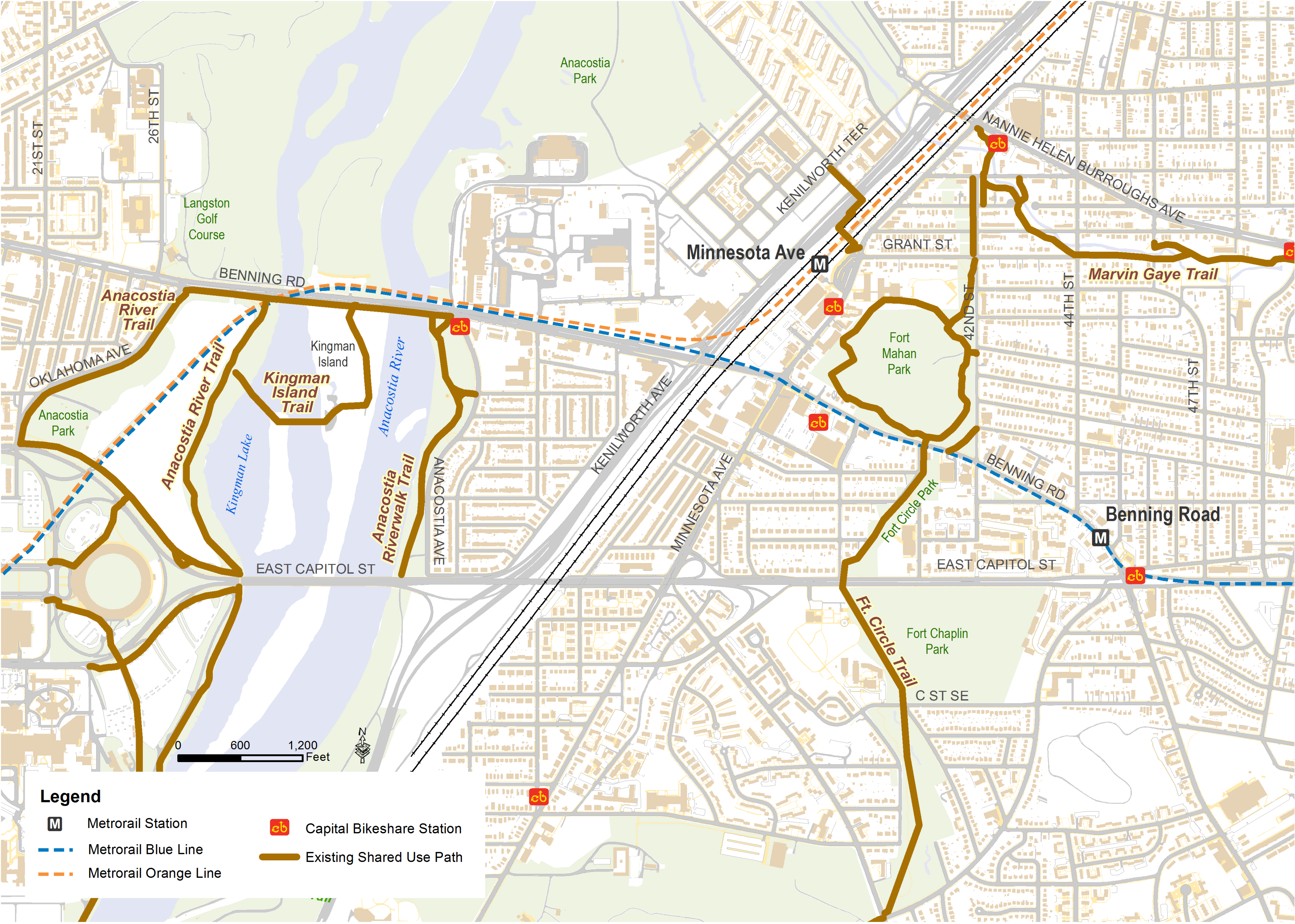
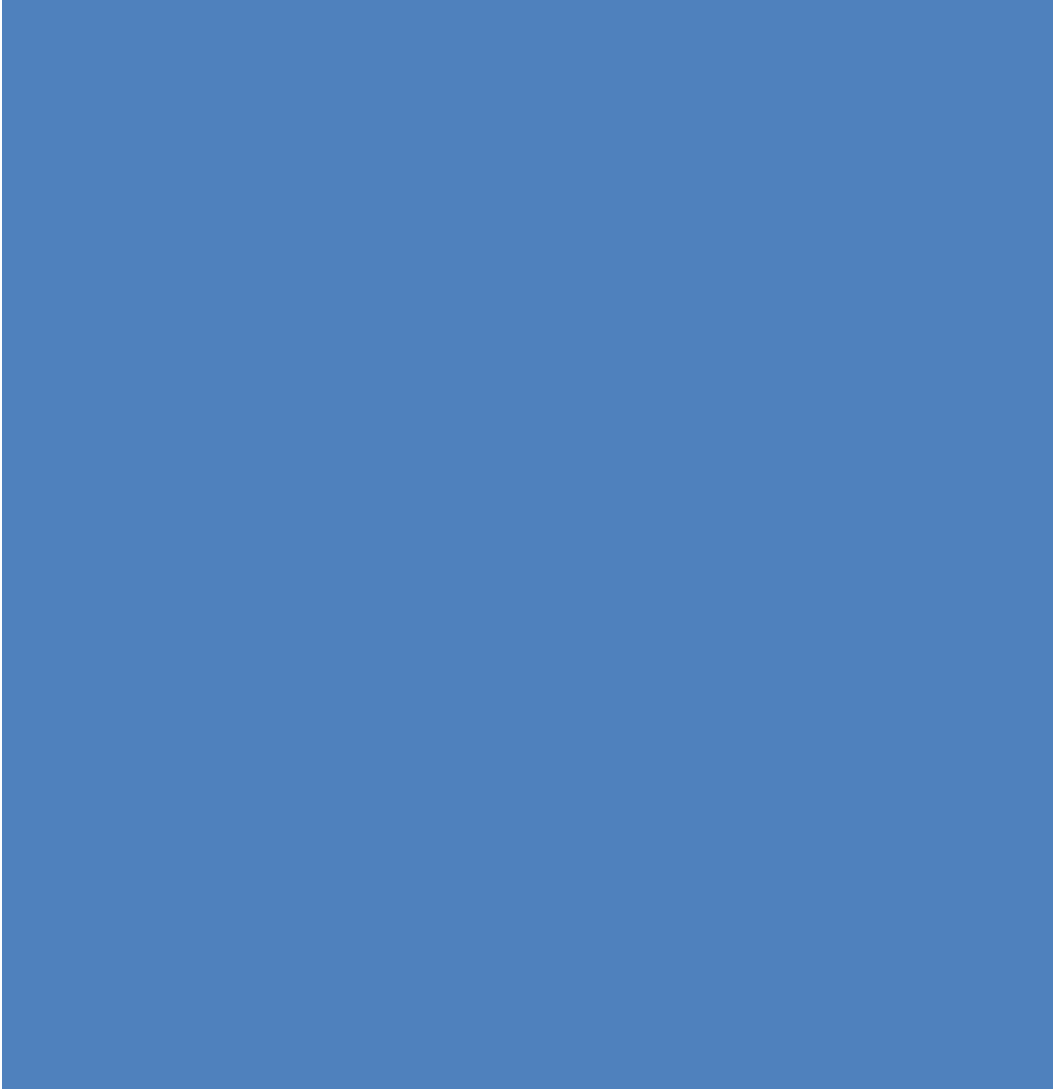


Route	Terminals	Hours of Service	Peak Frequency	Off-Peak Frequency	Average Daily Ridership (routes with over 7,000 riders)
X2	Minnesota Ave Station – Lafayette Square	4:15 AM – 3:20 AM	6	Off-Peak: 12 After Midnight: 30	15,683
U8	Capitol Heights Station – Benning Heights	24 Hour	10	Off-Peak: 12 After Midnight: 20-40	7,044
96, 97	Capitol Heights Station – Tenleytown-AU Station	4:52 AM – 2:48 AM	10	Off-Peak: 20 After Midnight: 30-40	7,025
W4	Deanwood Station – Anacostia Station	5:00 AM – 2:54 AM	10	Off-Peak: 20 After Midnight: 30	7,614

Source: WMATA Published Timetables (February 2014); Ridecheck Plus Data (December 2013)



# Bicycle and Pedestrian Conditions



Bicycle and Pedestrian Conditions		
Location	Bicycle	Pedestrian
Benning Road (Oklahoma Ave to Minnesota Ave)	Poor	Poor
Minnesota Avenue (Benning Rd to Nannie Helen Burroughs Ave)	Fair	Fair
Benning Road (Minnesota Ave to 42 <sup>nd</sup> St)	Poor	Good
Benning Road (42 <sup>nd</sup> St to E. Capitol St)	Poor	Fair

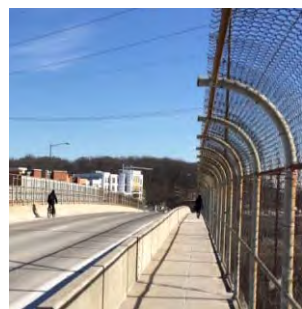


# Draft Purpose and Need

The purpose of this project is the reconstruction of Benning Road and Bridge(s) to provide safety and multi-modal improvements.

The needs for this project are:

- Improve condition of roadway and bridge(s)
- Provide additional transit options
- Enhance multi-modal safety
- Improve multi-modal transportation access
- Support land use





# Public Involvement

As part of the EA process there will be several ways for the public to learn about the project and comment:

## Three Public Meetings:

- Public Scoping Meeting – **April 22**
- Alternatives Development Meeting – **May 28**
- Public Hearing

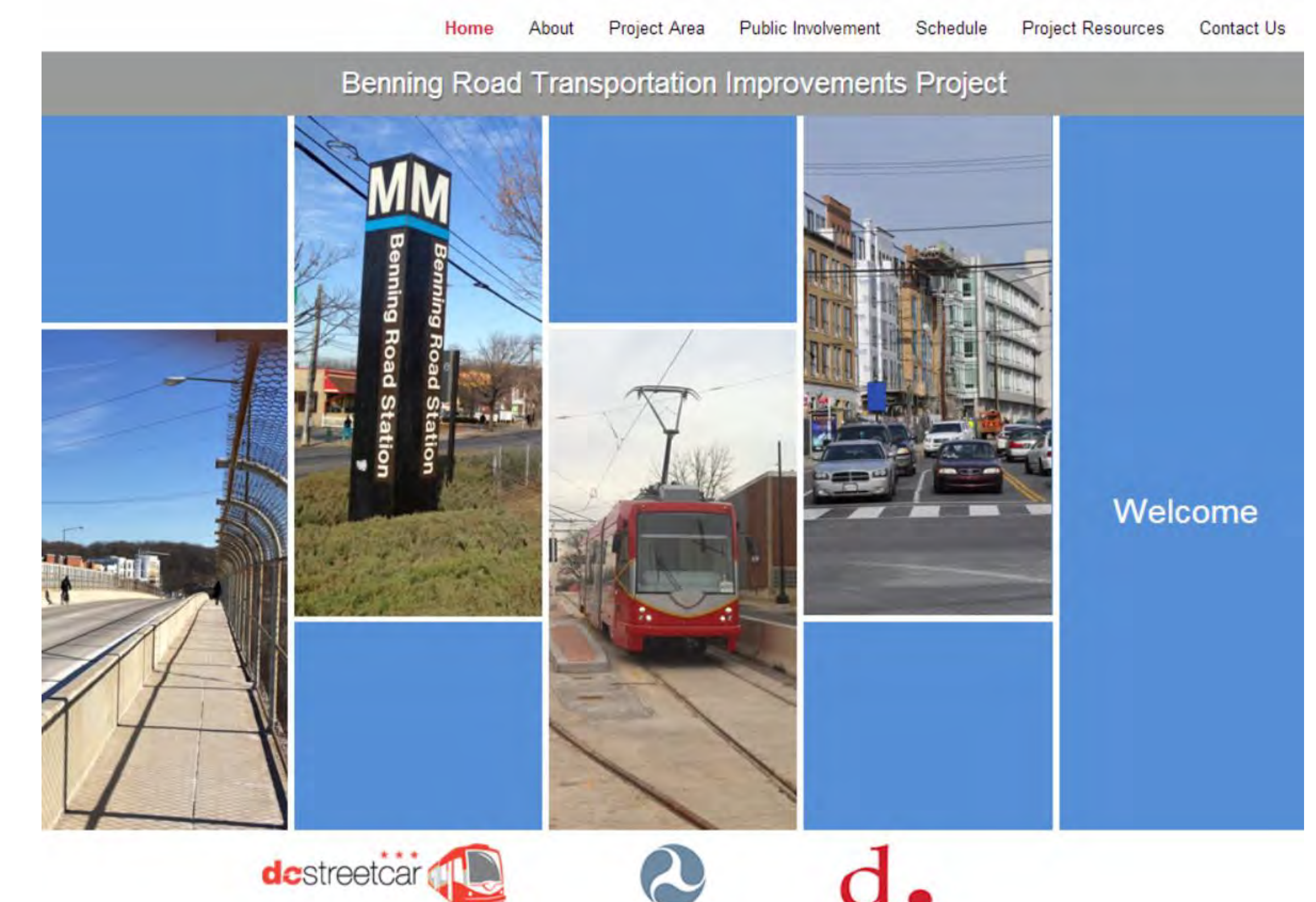
**Project Website:** [www.benningproject.com](http://www.benningproject.com)

## Contact Us:

- Phone: (202) 563-5003
- Email: [info@benningproject.com](mailto:info@benningproject.com)



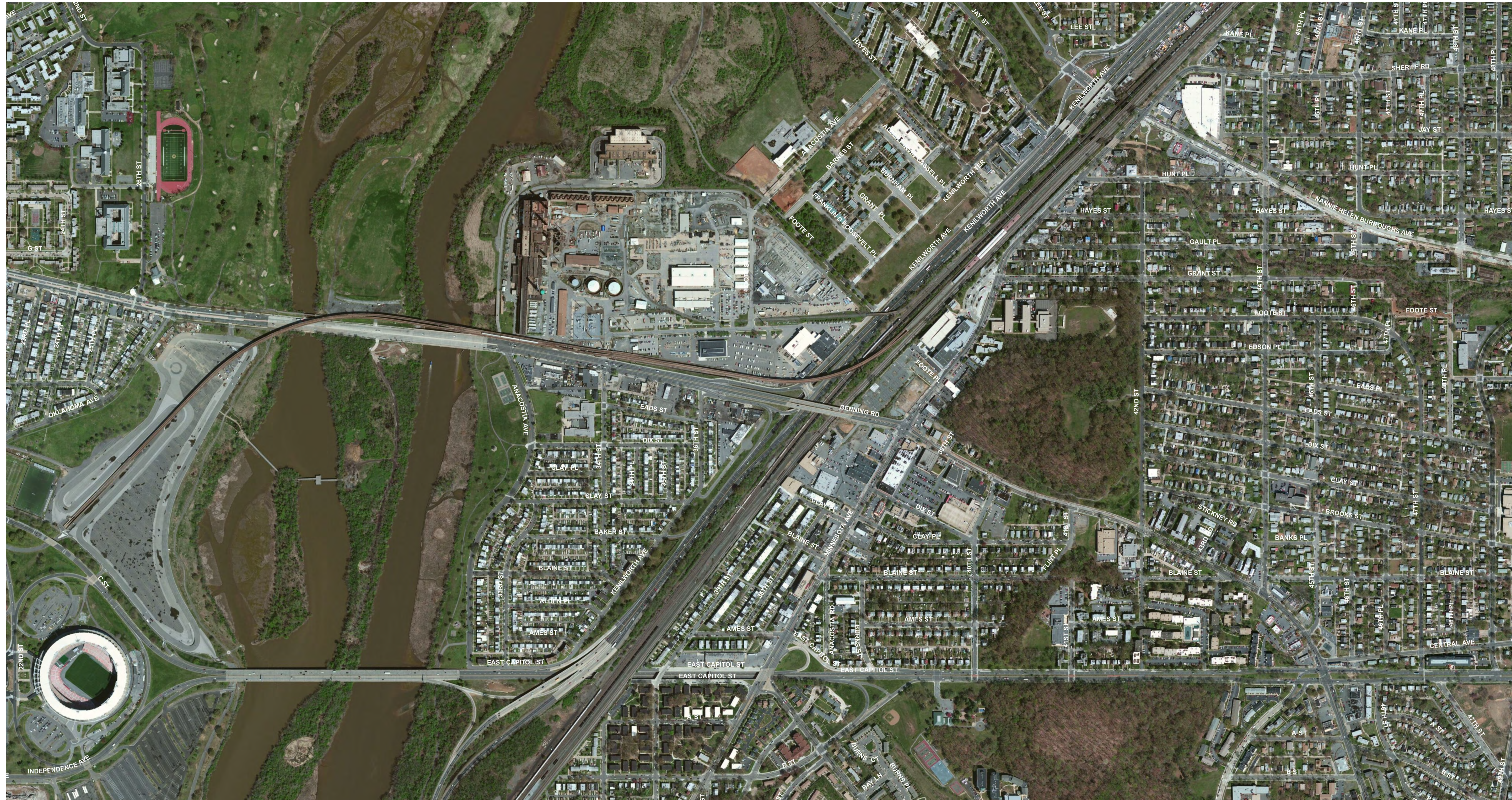
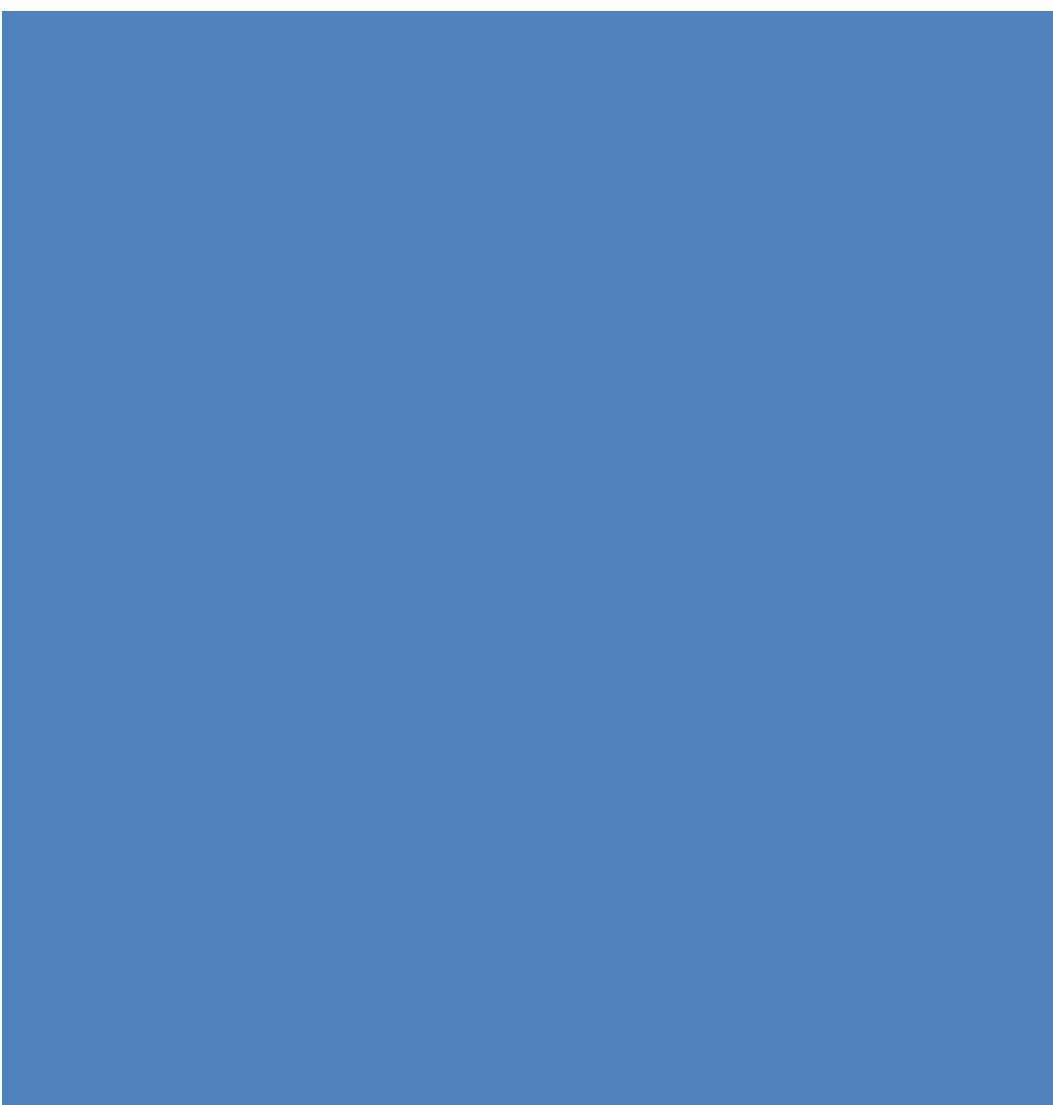
Public Scoping Meeting



The District Department of Transportation (DDOT) does not discriminate on the basis of actual or perceived: race, color, national origin, sex, age, marital status, personal appearance, sexual orientation, gender identity or expression, familial status, family responsibilities, matriculation, political affiliation, genetic information, disability, source of income, status as a victim of an intrafamily offense, or place of residence of business as provided by Title VI of the Civil Rights Act of 1964, the Americans with Disabilities Act, the D.C. Human Rights Act of 1977, and other related statutes. If you need special accommodations or language assistance services (translation or interpretation) please contact Malia Salaam at (202) 563-5003 or [info@benningproject.com](mailto:info@benningproject.com) 72 hours in advance of the meeting. These services will be provided free of charge.



# No Build



**Give us your  
feedback at the roll  
out map!**



# Concepts 1-5

## Streetcar Alignment from Oklahoma to Minnesota Avenue Metrorail



**Give us your  
feedback at the roll  
out map!**



# Concepts 6-10

## Streetcar Alignment from Oklahoma to Benning Road Metrorail



**Give us your  
feedback at the roll  
out map!**



# Concepts 11-15

Streetcar Alignment from Oklahoma to Minnesota Avenue & Benning Road Metrorail



**Give us your  
feedback at the roll  
out map!**

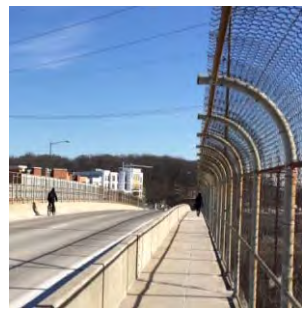


# Intersection Concepts

## Intersection Improvements at Benning Road and Minnesota Avenue

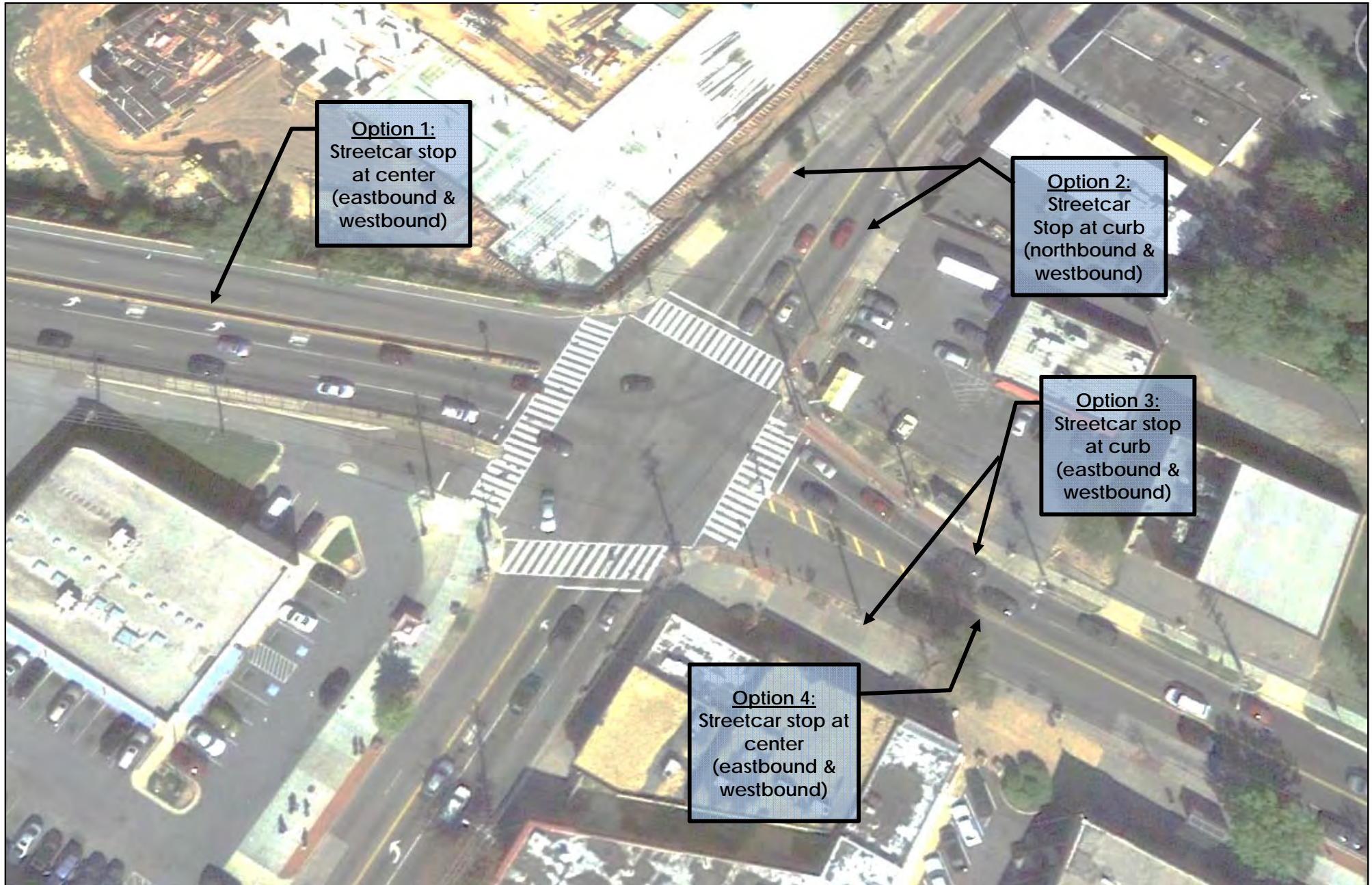


**Give us your  
feedback at the roll  
out map!**



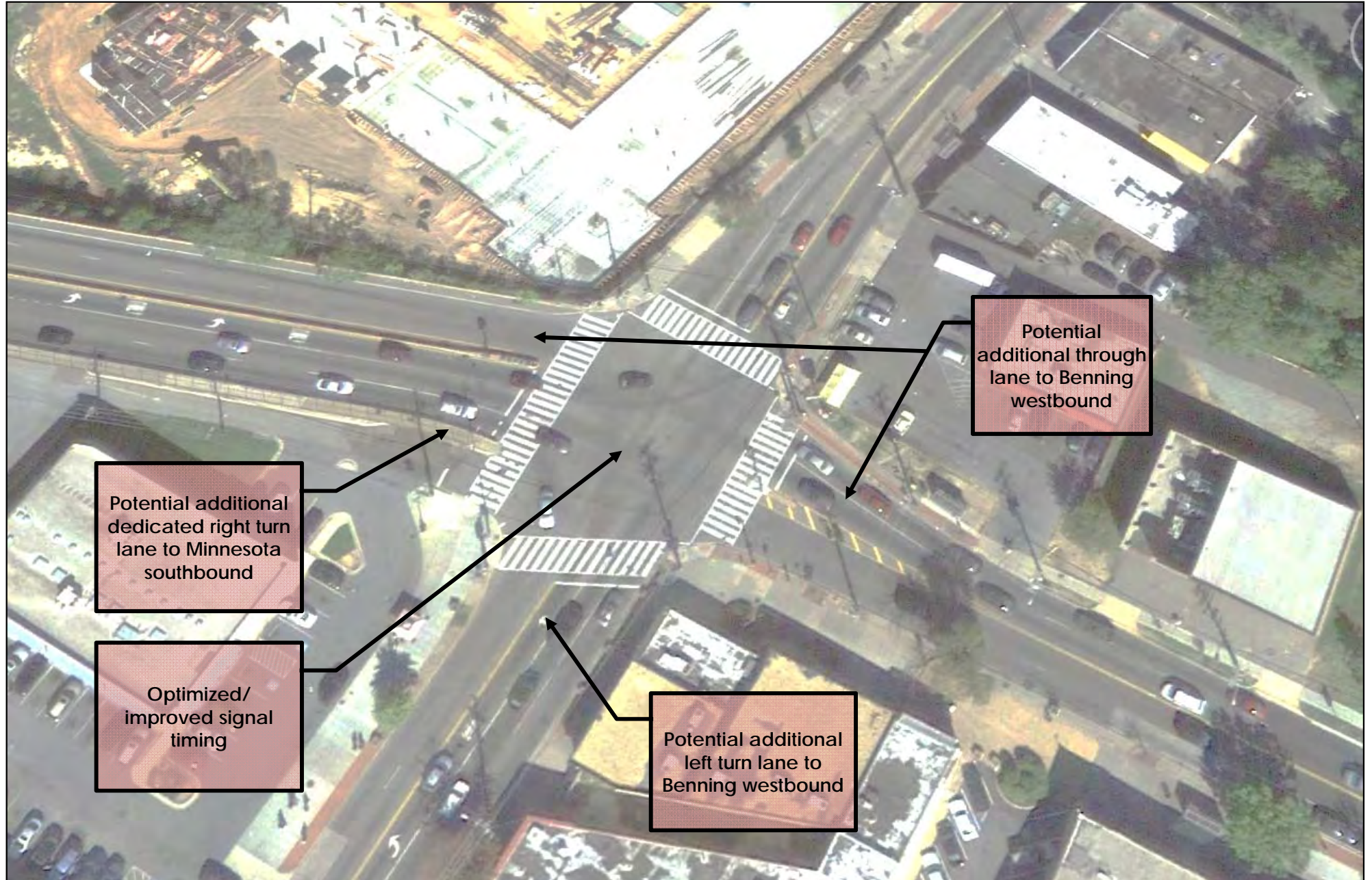


## Intersection Improvements at Benning Road and Minnesota Avenue for Streetcar





## Intersection Improvements at Benning Road and Minnesota Avenue for Vehicles





## Intersection Improvements at Benning Road and Minnesota Avenue for Pedestrians and Bicyclists

